

CERTIFICATE OF ANALYSIS

Product Name	ERG inhibitory peptide 1(EIP1), Cat.#: 318717 (TFA removed)
Lot No.	MTFA32877-250528
Sequence	LPPYLFT-NH2 (Acetate Salt)
Dissolution condition	100%H2O
Length	7AA
Modification	acetate salt
Molecular Weight (MW)	849.01
Storage	-20°C

Test Items	Specifications	Results
MW by MS	848.65	Conforms
Purity by HPLC	>95%	99.301%
Peptide content	N/A	N/A
Moisture content	N/A	N/A
Acetic acid content	N/A	N/A
Appearance	White to off-white lyophilized powder	Conforms
Quantity	5mg	5.0mg

NovoPro Bioscience Inc. (hereafter NovoPro) warrants material of said quality at the time of sale. It is the sole responsibility of the customers to determine the adequacy of all materials for any intended or specific purpose or use. NovoPro's sole obligation is to replace the material up to the extent of the purchase price. This warranty applies only to products in original packaging and does not apply to a product which has been tampered with or altered in any way in or which has been misused or damaged by accident or negligence. All claims must be received writing (by fax or email) within 30 days from date when product arrive at the destination city and failure to do so shall constitute a waiver by customers for any and all such claims.

Certified by:



Jun/05/2025

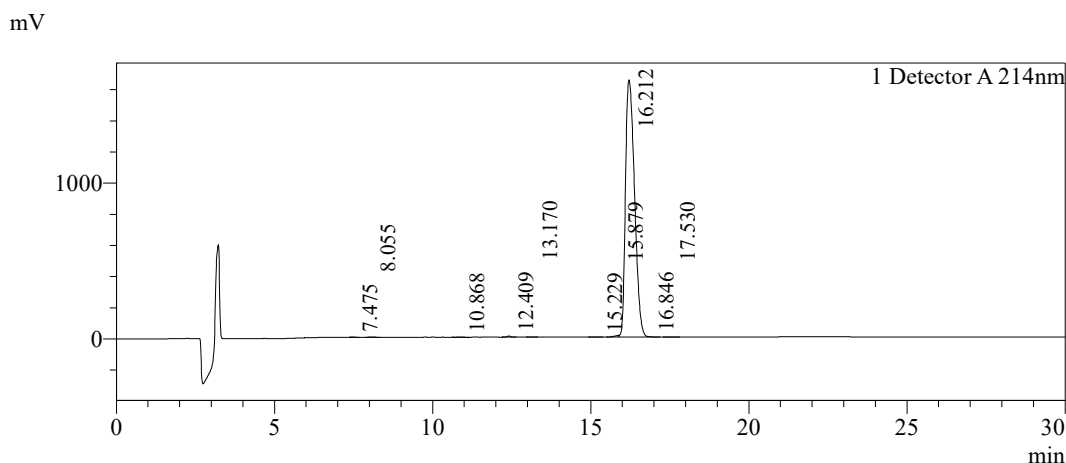
Quality Assurance Department



Sample Information

Order ID	:MTFA32877		
Name	:ERG inhibitory peptide 1(EIP1)		
Sequence	:LPPYLFT-NH2 (Acetate Salt)		
Lot. No	:MTFA32877-250528		
Pump A	:0.1%Trifluoroacetic in 100% water		
Pump B	:0.1%Trifluoroacetic in 100% acetonitrile		
Total Flow	:1ml/min		
Wavelength	:214nm		
Analytical column type	:Kromasil 100-5-C18 (4.6*250mm*5 μm)		
Dissolution method	:100%H2O		
Inj. Volume	: 25ul		
Time	Module	Action	Value
0.01	Pumps	B.Conc	20
30.00	Pumps	B.Conc	50
33.00	Pumps	B.Conc	100
38.00	Pumps	B.Conc	100
40.00	Pumps	B.Conc	20
50.00	Controller	Stop	

Chromatogram

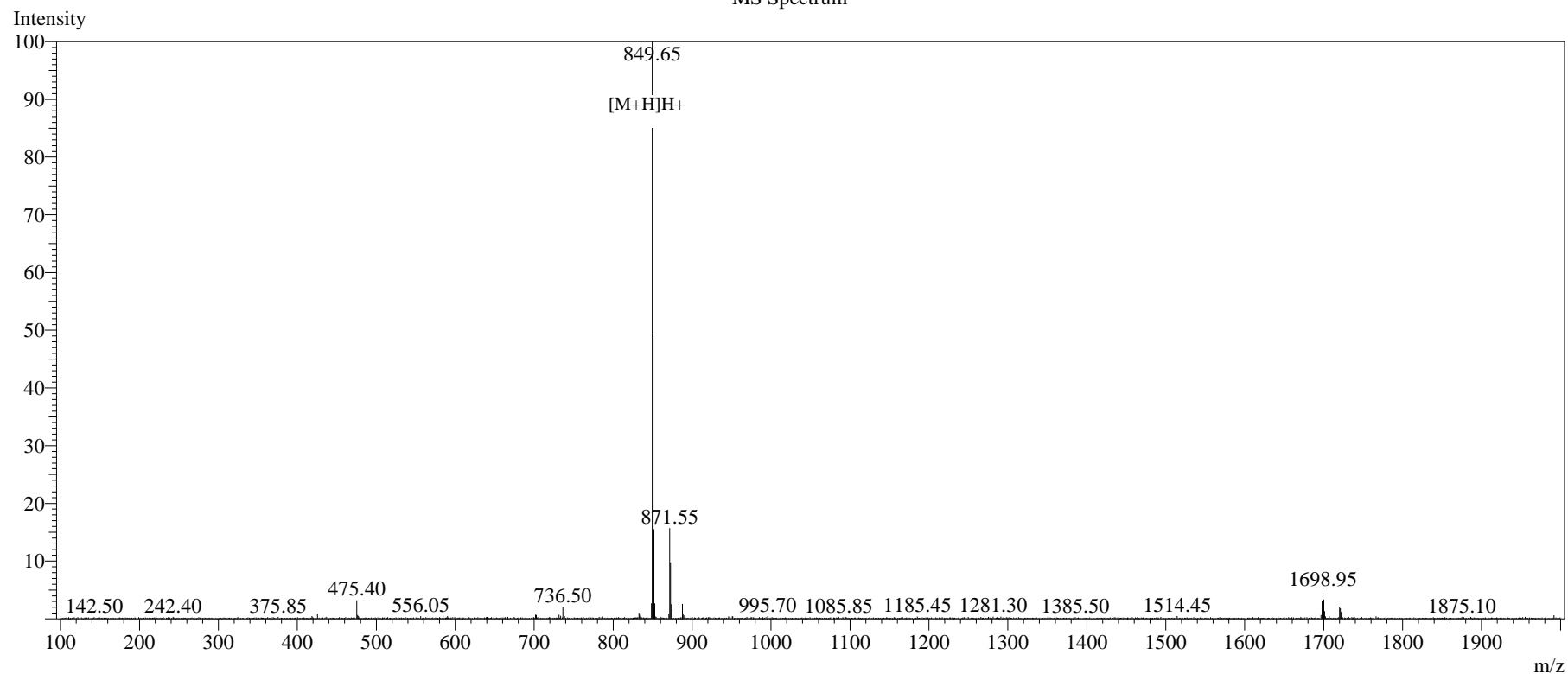


Peak Table

Detector A 214nm

Peak#	Ret. Time	Area	Height	Area%
1	7.475	6806	985	0.021
2	8.055	9253	1075	0.028
3	10.868	13965	1907	0.042
4	12.409	56878	7721	0.172
5	13.170	4693	552	0.014
6	15.229	8945	913	0.027
7	15.879	99447	10413	0.300
8	16.212	32868093	1649807	99.301
9	16.846	16866	1959	0.051
10	17.530	14639	995	0.044
Total		33099586	1676327	100.000

MS Spectrum



Sample Information

Dissolution method	:15% ACN+85% H ₂ O	Interface	:ESI	Prerod Bias	:+4.5kv
Date Acquired	:2025/06/04 13:43:35	Nebulizing Gas Flow	:1.50L/min	Detector	:-0.2kv
Injection Volume	:0.2ul	CDL Temp	:250°C	T.Flow	:0.2ml/min
Block Temp	:200	CDL Volt	:0v	B.conc	:50% H ₂ O/50% ME OH

Order ID	:MTFA32877
Name	:ERG inhibitory peptide 1(EIP1)
Sequence	:LPPYLFT-NH ₂ (Acetate Salt)
Lot.No	:MTFA32877-250528
Theoretical	:849.01
Observed	:848.65